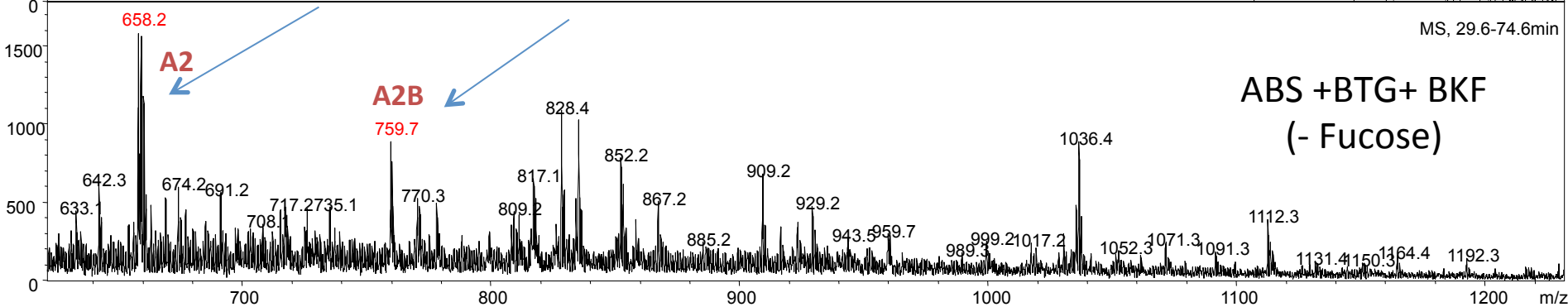
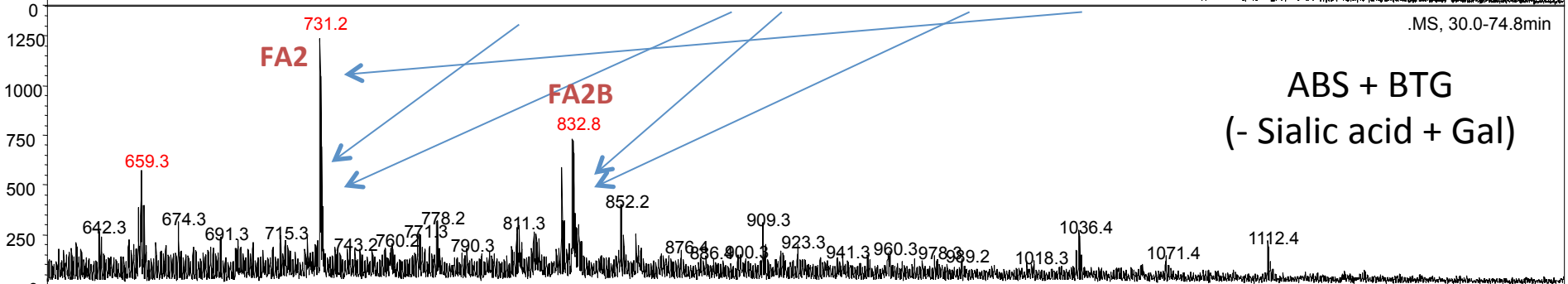
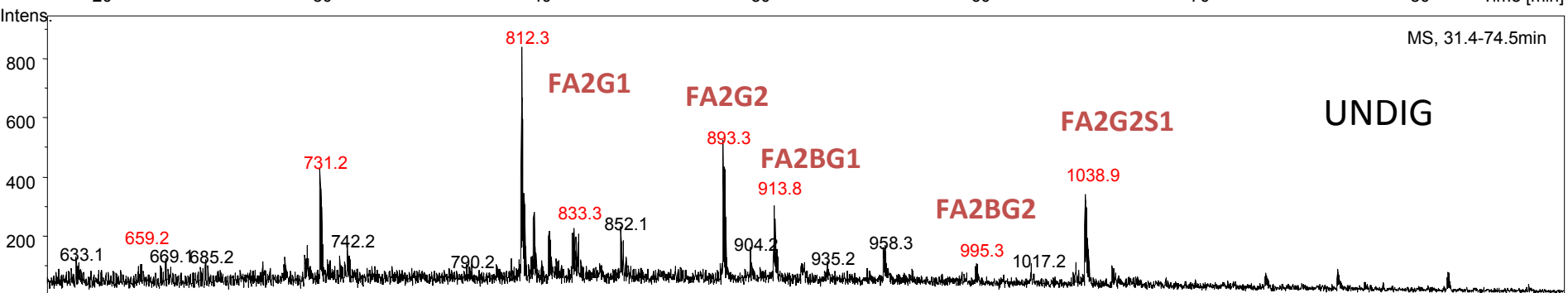
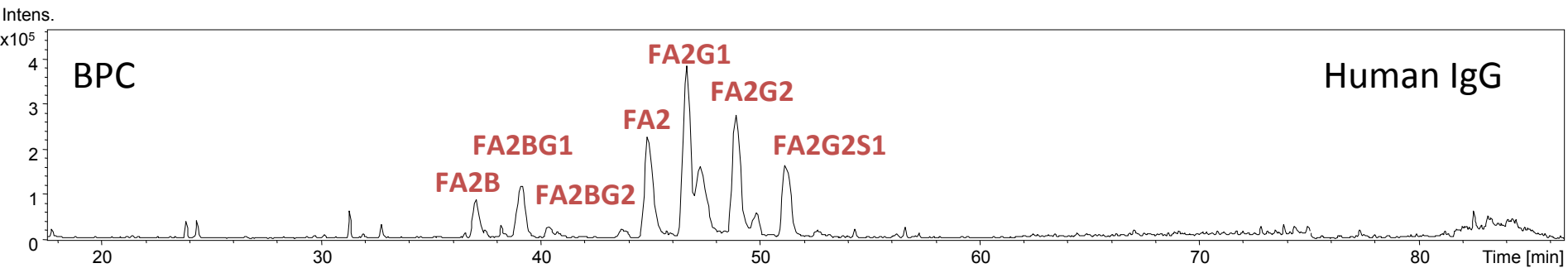


Analysis of IgG *N*-glycans by PGC-LC-MS with Exoglycosidase Digestions

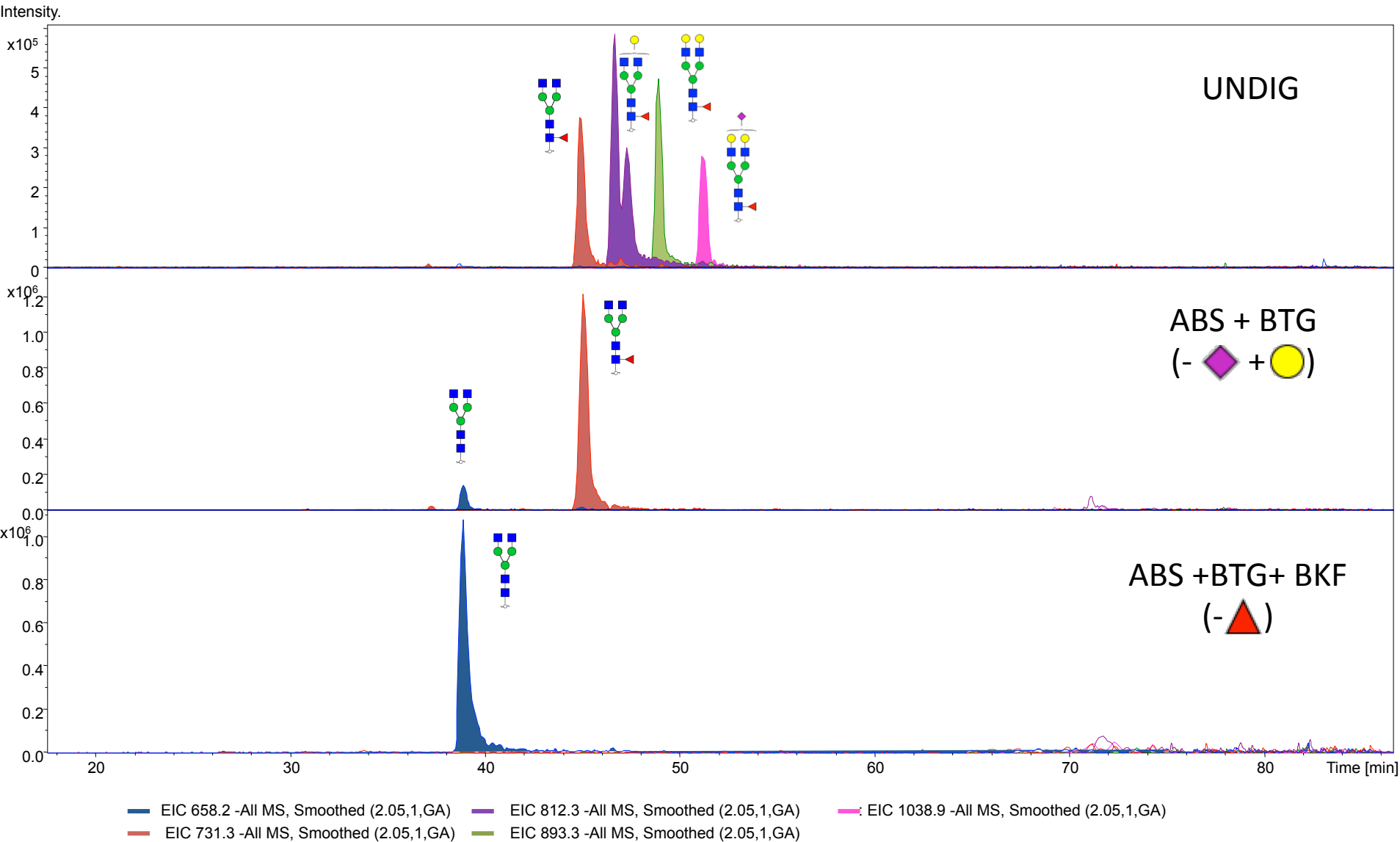
Data Interpretation

Example

Jodie L. Abrahams (Macquarie University)



Using Extracted Ion Chromatograms to Confirm Enzyme Activity



Overlay of Extracted Ion Chromatograms generated for initial glycan masses and the product massed after enzyme treatment.